

RESEARCH

Product Guide

Clearly better products for improved animal health and welfare.



Advancing Animal Research with More Effective and Ethical Hydration, Nutrition and Medication Delivery Solutions

Company Overview

ClearH₂O[®] is a Maine-based life science company meeting the needs of leading industry researchers and breeders. A strategic partnership with food and nutritional scientists allows us to provide cost-effective solutions to address unmet market demands, while saving time and labor. ClearH₂O[®] products are always consistent, eliminating nutrition and hydration variables in research.

ClearH₂O[®] products are manufactured under stringent quality standards. Our commitment to quality is supported by an FDA approved HACCP facility that is inspected by independent third-party accredited bodies and agencies. Our quality program follows Safe Quality Food (SQF) accreditation requirements compliant with the Global Food Safety Initiative (GFSI) certification. All HydroGel[®], DietGel[®], MediGel[®], LabGel[®], FiberBites[®], AquaFeed[®] and AquaPak[®] products are tested for quality and receive a certificate of analysis.

ClearH₂O[®]'s barrier packaged products are the only hydration, nutrition and medication delivery products that are commercially sterile inside and out. Our products are packaged in Tyvek[®] medical bags and are E-Beam irradiated. The result is easy to use individual cups and pouches, reducing the use of chemical sterilants, saving on labor cost and improving efficiency. Our knowledge of taste preferences promotes consumption, enhancing animal health and welfare. ClearH₂O[®] products support better research outcomes with a high commitment to the ethical treatment of laboratory animals.

HydroGel[®] is the #1 choice of breeders worldwide for hydrating research animals in transit. DietGel[®] products are the #1 soft gel, nutritionally fortified, dietary supplement for general health, breeders and weanlings, and compromised or special needs animals. MediGel[®] products are fast becoming the preferred medication delivery method, reducing the need for pain management injections and improving therapeutic administration. LabGel[®] and FiberBites[®] continue to offer unique and effective enrichment for nonhuman primates. And AquaPak[®], our latest innovation, is the first ready-to-use, pre-filled, pure water product in a pouch format, providing a cost-effective extended water supply while reducing labor.

ClearH₂O® Quick Reference Guide



APPLICATION / ANIMAL	PRODUCT DESCRIPTION	UNITS/CASE	PRODUCT NO.	PROCESS LEVEL	SHELF LIFE	STORAGE	PAGE
HYDRATION	HydroGel®, 2 oz	96 Cups/Case	70-01-5022	Irradiated	24 Months	Room Temperature	6, 7
	HydroGel®, 6 oz	70 Pouches/Case	70-01-1062	Irradiated	24 Months	Room Temperature	6, 7
	HydroGel®, 8 oz	55 Pouches/Case	70-01-1082	Irradiated	24 Months	Room Temperature	6, 7
	AquaPak®, 450 ml	32 Pouches/Case	70-40-1450	Acidified	24 Months	Room Temperature	8, 9
	AquaPak® Blue, 450 ml	32 Pouches/Case	70-50-1450	Acidified	24 Months	Room Temperature	8, 9
	AquaPak® CL, 450 ml*	32 Pouches/Case	70-60-1450	Chlorinated	24 Months	Room Temperature	8, 9
	AquaValve®, 100 count	18 Packs/Case	90-07	Ethylene oxide treated	NA	Room Temperature	10, 11
NUTRITION	DietGel® 76A, 2 oz	96 Cups/Case	72-07-5022	Irradiated	24 Months	Room Temperature	12, 13
	DietGel® 31M, 2 oz	96 Cups/Case	72-08-5022	Irradiated	24 Months	Room Temperature	14, 15
	DietGel® Boost, 2 oz	96 Cups/Case	72-04-5022	Irradiated	18 Months	Room Temperature	16, 17
	DietGel® Criticare, 4 oz	72 Cups/Case	72-05-5042	Irradiated	24 Months	Room Temperature	18, 19
	DietGel® Prenatal, 2 oz	96 Cups/Case	69-503-02	Irradiated	24 Months	Room Temperature	20, 21
	DietGel® Recovery, 2 oz	96 Cups/Case	72-06-5022	Irradiated	24 Months	Room Temperature	22, 23
	DietGel® 93M, 2 oz	96 Cups/Case	72-10-6000	Irradiated	24 Months	Room Temperature	24, 25
	DietGel® GEM, 2 oz	96 Cups/Case	72-12-5022	Irradiated	18 Months	Room Temperature	26, 27
	DietGel® Derm, 2 oz	96 Cups/Case	72-13-5022	Irradiated	24 Months	Room Temperature	28, 29
	AquaFeed® Z, 175g	33 Pouches/Case	60-01-1190	Ultra-Pasteurized	12 Months	Room Temperature	30, 31
	LabGel® Banana, 8 oz	55 Pouches/Case	71-02-1081	Ultra-Pasteurized	18 Months	Room Temperature	32, 33
LabGel® Primate, 8 oz	55 Pouches/Case	71-09-1081	Ultra-Pasteurized	18 Months	Room Temperature	34, 35	
MED. DELIVERY	MediGel® Sucralose, 2 oz	96 Cups/Case	74-02-5022	Irradiated	24 Months	Room Temperature	36, 37
ENRICHMENT	FiberBites®, 3.5 g gummy	1295 Drops/Case	73-01-2101	Human Grade	24 Months	Room Temperature	38, 39



* Special order, minimum quantities apply



HydroGel®

Hydration Supplement

HydroGel® is a non-wetting, commercially sterile water gel for animal hydration. 98% pure water. The industry standard for hydration during transportation.

Delivering Solutions

- Suitable for short or long transit shipping times
- Supplement for compromised, recovering, and weaning animals
- Alternative to water bottles and excellent emergency water source
- Helpful in transitioning animals to automated watering systems

Delivering Quality

- Commercially sterile inside and out
- Tyvek® medical packaging
- E-Beam irradiated
- Complies with quality standards as tested by an independent laboratory
- Certificate of analysis by manufactured lot
- Individually coded with lot and date of expiration

Instructions

- To be administered under the direction of a veterinarian
- Manufactured for use in research animals
- Dosage: 1 cup is designed for 5 mice over 2 days based on average size and consumption. Monitor intake.



HydroGel®

Nutritional Information per 100g

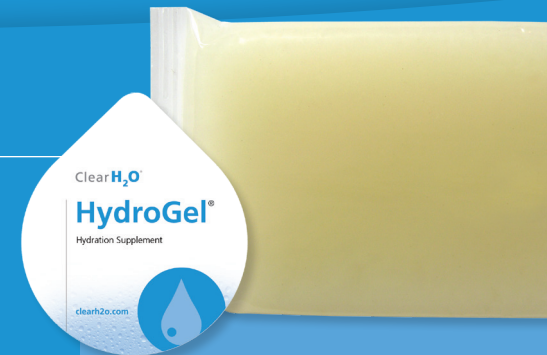
Calories	3.5 kcal
Protein	0.07 g
Carbohydrates	0.9 g
Dietary Fiber	0.9 g
Moisture	97-99 %
Calcium	20.4 mg
Phosphorus	23.9 mg
Potassium	25.1 mg
Sodium	23.6 mg

Ingredients

Purified Water, Hydrocolloids, Electrolyte Blend, Food Acids.

Shelf Life

Shelf life is 24 months, unopened at room temperature storage.



Ordering Information

HydroGel® - 70-01-5022

2 oz cup (56g)
96 cups per case
Barrier packed

HydroGel® - 70-01-1062

6 oz pouch (170g)
70 pouches per case
Barrier packed

HydroGel® - 70-01-1082

8 oz pouch (226g)
55 pouches per case
Barrier packed





AquaPak®

Purified Water

AquaPak® – Purified water for laboratory animals.

Delivering Solutions

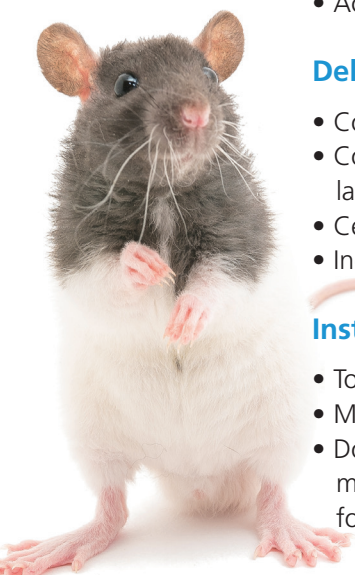
- Convenient alternative to water bottles
- Excellent emergency water source
- Ready-to-use pouch saves labor, eliminates bottle filling and washing equipment
- 450 ml pouch volume provides extended water supply
- Air-free pouch easily molds to fit cage lid water receptacle
- Acidified and chlorinated formulations available

Delivering Quality

- Commercially sterile
- Complies with quality standards as tested by an independent laboratory
- Certificate of analysis by manufactured lot
- Individually coded with lot and date of expiration

Instructions

- To be administered under the direction of a veterinarian
- Manufactured for use in research animals
- Dosage: Based on an average daily water consumption of 5mls/ mouse/day, one 450 ml AquaPak® pouch will last at least 14 days for a five-mouse cage density.



AquaPak®

Nutritional Information per 100g

Calories	0 %
Protein	0 %
Carbohydrates	0 %
Sugars	0 %
Dietary Fiber	0 %
Fat-total	0 %
Saturated Fat	0 %
Trans Fatty Acid	0 %
Cholesterol	0 %
Moisture	99-100 %
Calcium	0 %
Phosphorus	40.4 mg
Potassium	0 %
Sodium	0 %

Ingredients

70-40-1450, Clear: Purified Water, Food Acid.

70-50-1450, Blue: Purified Water, Food Acid, Blue #1.

70-60-1450, Chlorinated: Purified Water, Sodium Hypochlorite.

Shelf Life

Shelf life is 24 months, unopened at room temperature storage.



Ordering Information

AquaPak®
70-40-1450
450 ml pouch (acidified clear)
32 pouches/case

AquaPak® Blue
70-50-1450
450 ml pouch (acidified blue)
32 pouches/case

AquaPak® CL*
70-60-1450
450 ml pouch (chlorinated)
32 pouches/case



* Special order minimum quantities apply



AquaValve®

Drinking Valve for AquaPak®

AquaValve® is the drinking valve developed for exclusive use with AquaPak® water pouches.

Delivering Solutions

- Easy activation for weanling transition
- Durable design for extended use
- Robust, chew-resistant construction
- Convenient bulk packaging
- Fits pouch-compatible and disposable cage systems

Delivering Quality

- Ethylene oxide treated
- FDA-compliant for food and water contact surfaces
- Made from BPA-free POM material
- Certificate of analysis by manufactured lot



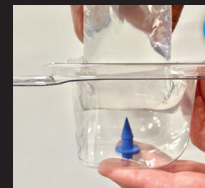
Using AquaValve®



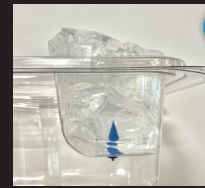
1 Remove the cage lid and align the AquaValve® for insertion into the lid water access hole in the water bottle receptacle.



2 Support the bottom of the lid with two fingers on either side of the water access hole as you push the activator end of the valve through the hole.



3 With a relaxed grip, orient AquaPak® with the smooth side approaching the piercing cone of the AquaValve®. Keep two fingers on the bottom of the lid to support the valve.



4 With a firm grip to pressurize the bottom of the AquaPak®, thrust the pouch forward piercing it onto the AquaValve® collar. Check the AquaValve® by gently touching the activator to observe water flow.



Ordering Information

AquaValve®
90-07
100 count pack
18 packs/case





DietGel® 76A

Dietary Supplement

DietGel® 76A is a nutritionally fortified dietary supplement, combining hydration and nutrition in a single serving. Formulated with purified ingredients, modeled on the AIN 76A maintenance diet formulation. It is flavor enhanced resulting in increased consumption.

Delivering Solutions

- Combines hydration and balanced nutrition
- Models AIN 76A nutrient profile
- Purified ingredients provide consistent nutrition
- Soft gel promotes consumption by compromised animals, including EAE, aging, neurological, surgical, cancer and immunodeficient models
- Superior alternative to mash diets

Delivering Quality

- Commercially sterile inside and out
- Tyvek® medical packaging
- E-Beam irradiated
- Complies with quality standards as tested by an independent laboratory
- Certificate of analysis by manufactured lot
- Individually coded with lot and date of expiration

Instructions

- To be administered under the direction of a veterinarian
- Manufactured for use in research animals
- Dosage: 1 cup is designed for 5 mice over 2 days based on average size and consumption. Monitor intake.



DietGel® 76A

Nutritional Information per 100g

	w/Animal Protein	w/Wheat Protein
Calories	103.0 kcal	120.5 kcal
Protein	5.0 g	4.1 g
Carbohydrates (total)	18.1 g	22.2 g
Sugars	12.5 g	17.9 g
Dietary Fiber	1.5 g	1.7 g
Fat (total)	1.5 g	1.8 g
Saturated Fat	0.2 g	0.2 g
Moisture	70-74 %	67-71 %
Calcium	250.9 mg	261.2 mg
Phosphorus	320.9 mg	257.6 mg
Potassium	337.3 mg	242.1 mg
Sodium	54.5 mg	39.1 mg

Ingredients - 72-07-5022

Purified Water, Molasses, Animal Protein (Milk), Vegetable Oil, Food Acids, Cane Sugar, Mineral Mix, Hydrocolloids, Corn Fiber, Vitamin Mix, Electrolyte Blend, L-Methionine.

Ingredients - 72-07-5022X

Purified Water, Molasses, Corn Syrup, Cane Sugar, Plant Protein (Wheat), Vegetable Oil, Mineral Mix, Hydrocolloids, Food Acids, Vitamin Mix, Corn Fiber, L-Methionine.

Shelf Life

Shelf life is 24 months, unopened at room temperature storage.



Ordering Information

DietGel® 76A - 72-07-5022
(w/Animal Protein)
2 oz cup (56g)
96 cups per case
Barrier packed

DietGel® 76A - 72-07-5022X
(w/Wheat Protein)
2 oz cup (56g)
96 cups per case
Barrier packed





DietGel® 31M

Dietary Supplement

DietGel® 31M is a nutritionally fortified dietary supplement, combining hydration and nutrition in a single serving. Modeled after the NIH 31 Modified formula and made with purified ingredients. The soft texture is ideal for compromised animals.

Delivering Solutions

- Combines hydration and balanced nutrition
- Models NIH 31M nutrient profile
- Purified ingredients provide consistent nutrition
- Soft gel promotes consumption by compromised animals, including EAE, aging, neurological, surgical, cancer and immunodeficient models

Delivering Quality

- Commercially sterile inside and out
- Tyvek® medical packaging
- E-Beam irradiated
- Complies with quality standards as tested by an independent laboratory
- Certificate of analysis by manufactured lot
- Individually coded with lot and date of expiration

Instructions

- To be administered under the direction of a veterinarian
- Manufactured for use in research animals
- Dosage: 1 cup is designed for 5 mice over 2 days based on average size and consumption. Monitor intake.



DietGel® 31M

Nutritional Information per 100g

Calories	210.4 kcal
Protein	5.6 g
Carbohydrates - total	30.3 g
Sugars	20.5 g
Dietary Fiber	1.4 g
Fat – total	7.6 g
Saturated Fat	0.8 g
Moisture	53-56 %
Calcium	152.8 mg
Phosphorus	261.6 mg
Potassium	304.7 mg
Sodium	27.0 mg

Ingredients

Purified Water, Molasses, Pumpkin, Corn Syrup, Vegetable Oil, Plant Protein (Wheat), Food Acids, Hydrocolloids, Mineral Mix, Corn Fiber, Electrolyte Blend, Vitamin Mix.

Shelf Life

Shelf life is 24 months, unopened at room temperature storage.



Ordering Information

DietGel® 31M
72-08-5022
2 oz cup (56g)
96 cups per case
Barrier packed





DietGel® Boost

High Calorie Dietary Supplement

DietGel® Boost is a high-energy nutritional supplement that provides caloric support for weanlings, post surgical, debilitated, and aging animals.

Delivering Solutions

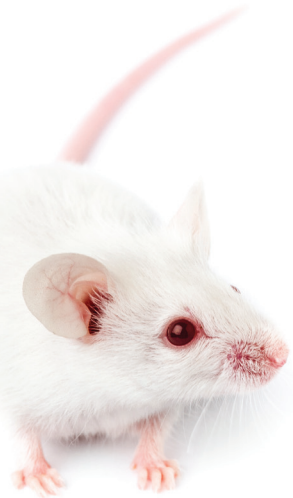
- Provides supplemental caloric and nutritional intake
- Increases pup survival rates
- Great taste promotes consumption
- Provides extra energy to aid in recovery
- Easily digested soft texture, suitable for oral gavage

Delivering Quality

- Commercially sterile inside and out
- Tyvek® medical packaging
- E-Beam irradiated
- Complies with quality standards as tested by an independent laboratory
- Certificate of analysis by manufactured lot
- Individually coded with lot and date of expiration

Instructions

- To be administered under the direction of a veterinarian
- Manufactured for use in research animals
- Dosage: 1 cup is designed for 5 mice over 2 days based on average size and consumption. Monitor intake.



DietGel® Boost

Nutritional Information per 100g

Calories	361.0 kcal
Protein	9.6 g
Carbohydrates - total	40.2 g
Sugars	24.2 g
Dietary Fiber	3.8 g
Fat - total	20.0 g
Saturated Fat	4.0 g
Moisture	25-30 %
Calcium	64.7 mg
Phosphorus	249.5 mg
Potassium	525.7 mg
Sodium	170.9 mg

Ingredients

Peanut Butter, Molasses, Corn Syrup, Purified Water, Pumpkin, Emulsifier, Food Acids, Vitamin Mix, Corn Fiber, Electrolyte Blend, Hydrocolloids.

Shelf Life

Shelf life is 18 months, unopened at room temperature storage. Product separation is natural, stir well to blend. (Similar to all natural peanut butter.)



Ordering Information

DietGel® Boost
72-04-5022
 2 oz cup (56g)
 96 cups per case
 Barrier packed



HydroGel®



DietGel®



LabGel®



AquaPak®



MediGel®



FiberBites®



AquaFeed® Z



DietGel® Criticare

Dietary Supplement with Timothy Hay

DietGel® Criticare, formulated with Timothy Hay, is a nutritionally fortified supplement for herbivores that are unwilling to eat their normal diet due to illness, surgery, or malnutrition.

Delivering Solutions

- Suited for rabbits and guinea pigs
- Flavorful soft gel formulation promotes consumption
- Improves proper gut health and digestion, and aides recovery
- Ready to use - no mixing required

Delivering Quality

- Commercially sterile inside and out
- Tyvek® medical packaging
- E-Beam irradiated
- Complies with quality standards as tested by an independent laboratory
- Certificate of analysis by manufactured lot
- Individually coded with lot and date of expiration

Instructions

- To be administered under the direction of a veterinarian
- Manufactured for use in research animals
- Dosage: 1 cup per day based on average size and consumption. Monitor intake.



DietGel® Criticare

Nutritional Information per 100g

Calories	81.0 kcal
Protein	3.0 g
Carbohydrates - total	17.0 g
Sugars	10.8 g
Dietary Fiber	4.0 g
Fat – total	1.1 g
Moisture	70-75 %
Calcium	203.1 mg
Phosphorus	121.0 mg
Potassium	166.9 mg
Sodium	27.8 mg

Ingredients

Purified Water, Fruit Juice Concentrate, Plant Protein (Soybean), Pumpkin, Timothy Hay, Cellulose, Mineral Mix, Hydrocolloids, Vegetable Oil, Food Acids, Electrolyte Blend, Vitamin Mix.

Shelf Life

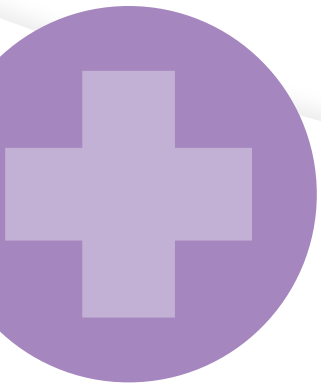
Shelf life is 24 months, unopened at room temperature storage.



Ordering Information

DietGel® Criticare
72-05-5042
4 oz cup (112g)
72 cups per case
Barrier packed





DietGel® Prenatal

Dietary Supplement for Breeding Support

DietGel® Prenatal is a high protein supplement, combining hydration and nutrition in a single serving for lactating and breeding rodents. Formulated with purified ingredients and Omega 3 fatty acids.

Delivering Solutions

- High calorie supplement for breeding and lactating rodents
- Superior alternative to mash diets
- Excellent source of high quality protein and Omega 3 fatty acids
- Contains folic acid and iron for increased nutritional demands
- Contains flax seeds for foraging

Delivering Quality

- Commercially sterile inside and out
- Tyvek® medical packaging
- E-Beam irradiated
- Complies with quality standards as tested by an independent laboratory
- Certificate of analysis by manufactured lot
- Individually coded with lot and date of expiration

Instructions

- To be administered under the direction of a veterinarian
- Manufactured for use in research animals
- Dosage: 1 cup is designed for 5 mice over 2 days based on average size and consumption. Monitor intake.



DietGel® Prenatal

Nutritional Information per 100g

Calories	267.0 kcal
Protein	13.6 g
Carbohydrates (total)	19.1 g
Sugars	13.7 g
Dietary Fiber	2.0 g
Fat (total)	15.5 g
Saturated Fat	2.8 g
Omega 3 Fatty Acids	2.4 %
Moisture	46-50 %
Calcium	304.3 mg
Phosphorus	343.5 mg
Potassium	467.0 mg
Sodium	114.5 mg
Iron	2.0 mg
Folic Acid	50.1 mcg

Ingredients

Purified Water, Animal Protein (Fish, Milk), Molasses, Fish Oil, Flax Seeds, Vegetable Oil, Food Acids, Emulsifier, Mineral Mix, Hydrocolloids, Vitamin Mix, Corn Fiber, L-Methionine.

Shelf Life

Shelf life is 24 months, unopened at room temperature storage.



Ordering Information

DietGel® Prenatal
69-503-02
2 oz cup (56g)
96 cups per case
Barrier packed





DietGel® Recovery

Hydration & Electrolyte Supplement

DietGel® Recovery is a flavor enhanced nutritionally fortified water gel including all six essential electrolytes that aids in the recovery of post surgical, weak or impaired rodents. Proven to increase survival rates in compromised animals. Formulated with purified ingredients that provides over 70% water, calories and electrolytes.

Delivering Solutions

- Hydrates, replenishes, supports recovery
- Increases post-surgical survival rate
- Increases pup survival rates
- Aids in overall health during long-term shipping

Delivering Quality

- Commercially sterile inside and out
- Tyvek® medical packaging
- E-Beam irradiated
- Complies with quality standards as tested by an independent laboratory
- Certificate of analysis by manufactured lot
- Individually coded with lot and date of expiration



Instructions

- To be administered under the direction of a veterinarian
- Manufactured for use in research animals
- Dosage: 1 cup is designed for 5 mice over 2 days based on average size and consumption. Monitor intake.

Please refer to pages 41 - 42 for recommendations on adding desired medications.

DietGel® Recovery

Nutritional Information per 100g

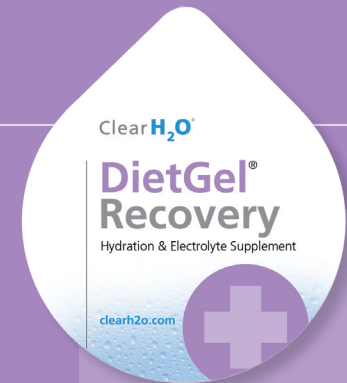
Calories	112.4	kcal
Protein	0.6	g
Carbohydrates (total)	23.1	g
Sugars	19.9	g
Dietary Fiber	1.1	g
Fat (total)	1.9	g
Saturated Fat	0.2	g
Moisture	71-75	%
Calcium	40.4	mg
Phosphorus	48.5	mg
Potassium	80.2	mg
Sodium	101.8	mg
Magnesium	0.6	mg
Chloride	114.9	mg

Ingredients

Purified Water, Cane Sugar, Corn Syrup, Molasses, Vegetable Oil, Hydrocolloids, Plant Protein (Wheat), Electrolyte Blend, Food Acids, Mineral Mix.

Shelf Life

Shelf life is 24 months, unopened at room temperature storage.



Ordering Information

DietGel® Recovery
72-06-5022
2 oz cup (56g)
96 cups per case
Barrier packed





DietGel® 93M

Moist Diet

DietGel® 93M is a complete maintenance diet containing a full spectrum of vitamins and minerals. Formulated with purified ingredients and modeled on the AIN 93M diet, it is flavor enhanced to promote consumption.

Delivering Solutions

- Complete maintenance diet combined with hydration in a soft gel
- Superior alternative to mash diets
- Reduces time and labor
- Recommended for aging mice, cancer models, and malocclusions

Delivering Quality

- Commercially sterile inside and out
- Tyvek® medical packaging
- E-Beam irradiated
- Complies with quality standards as tested by an independent laboratory
- Certificate of analysis by manufactured lot
- Individually coded with lot and date of expiration

Instructions

- To be administered under the direction of a veterinarian
- Manufactured for use in research animals
- Dosage: 1 cup is designed for 5 mice over 2 days based on average size and consumption. Monitor intake.



DietGel® 93M

Nutritional Information per 100g

Calories	139.0 kcal
Protein	7.0 g
Carbohydrates	25.2 g
Sugars	14.8 g
Dietary Fiber	2.5 g
Fat (total)	1.6 g
Saturated Fat	0.2 g
Moisture	60-64 %
Calcium	414.7 mg
Phosphorus	650.3 mg
Potassium	346.3 mg
Sodium	118.3 mg

Ingredients

Purified Water, Corn Syrup, Molasses, Animal Protein (Milk), Hydrocolloids, Modified Food Starch, Mineral Mix, Vegetable Oil, Food Acids, Vitamin Mix, Electrolyte Blend, L-Cystine.

Shelf Life

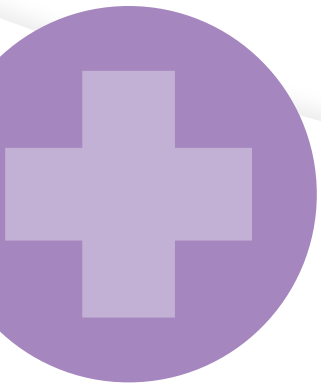
Shelf life is 24 months, unopened at room temperature storage.



Ordering Information

DietGel® 93M
72-10-6000
2 oz cup (56g)
96 cups per case
Barrier packed





DietGel® GEM

Dietary Supplement

DietGel® GEM is a nutritionally fortified dietary supplement designed to support the health of genetically modified rodent strains to thrive through the growth, reproduction, maintenance and ageing life stages. Formulated with purified ingredients with high milk protein and milk fat to duplicate the essential nutrients during lactation, DietGel® GEM is particularly effective at supporting the vulnerable weanling stage of GEM rodents. DietGel® GEM combines hydration and nutrition in a single serving, and is flavor enhanced to increase consumption.

Delivering Solutions

- Helps GEM rodents thrive through weaning, adulthood and ageing
- Supports pup rearing, reproduction and growth
- Contains high protein for healthy weight gain
- Soft texture for easy consumption

Delivering Quality

- Commercially sterile inside and out
- Tyvek® medical packaging
- E-Beam irradiated
- Complies with quality standards as tested by an independent laboratory
- Certificate of analysis by manufactured lot
- Individually coded with lot and date of expiration

Instructions

- To be administered under the direction of a veterinarian
- Manufactured for use in research animals
- Dosage: 1 cup is designed for 5 mice over 2 days based on average size and consumption. Monitor intake.



DietGel® GEM

Nutritional Information per 100g

Calories	262.3 kcal
Protein	12.6 g
Carbohydrates - total	19.0 g
Dietary Fiber	1.7 g
Fat - total	15.6 g
Moisture	46-51 %
Calcium	327.8 mg
Phosphorus	456.0 mg
Potassium	391.3 mg
Sodium	108.1 mg

Ingredients

Purified Water, Molasses, Vegetable Oil, Animal Protein (Fish, Milk), Cream Powder, Food Acids, Emulsifier, Mineral Mix, Corn Fiber, Vitamin Mix, Electrolyte Mix, L-Methionine.

Shelf Life

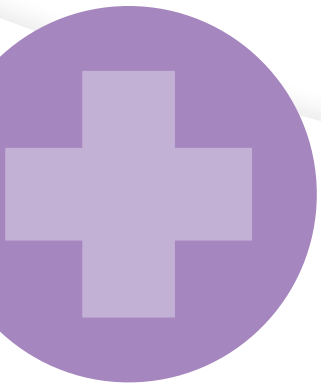
Shelf life is 18 months, unopened at room temperature storage.



Ordering Information

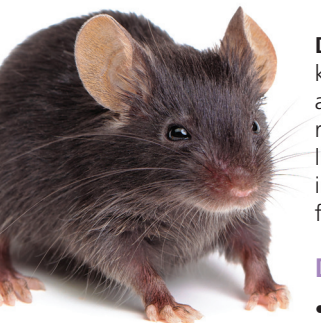
DietGel® GEM
72-12-5022
2 oz cup (56g)
96 cups per case
Barrier packed





DietGel® Derm

Dietary Supplement for Dermatological Support



DietGel® Derm is a nutritionally fortified dietary supplement, combining key prebiotic and nutritional ingredients identified as supporting gut health and the conditions associated with addressing ulcerative dermatitis (UD) in rodents. Researchers studying both the cause and treatment of UD have linked dietary fat content, fatty acid balance, and fiber as instrumental in the incidence of UD. DietGel®Derm incorporates these elements with enhanced flavor to increase consumption.

Delivering Solutions

- Effective delivery of balanced fatty acids.
- Contains Vitamin A and D – important for skin health.
- Reduces time and labor
- Recommended as the nutritional component in combination with other treatment practices.

Delivering Quality

- Commercially sterile inside and out
- Tyvek® medical packaging
- E-Beam irradiated
- Purified ingredients exclude phytoestrogens and nitrosamines
- Complies with quality standards as tested by an independent laboratory
- Certificate of analysis by manufactured lot
- Individually coded with lot and date of expiration

Instructions

- To be administered under the direction of a veterinarian
- Manufactured for use in research animals
- Dosage: For rodents susceptible and/or exhibiting early signs of UD, administer 1 cup for up to 5 mice over 2 days based on average size and consumption. Monitor intake and adjust accordingly.

DietGel® Derm

Nutritional Information per 100g

Calories	133.0 kcal
Protein	4.8 g
Carbohydrates - total	23.0 g
Sugars	14.8 g
Dietary Fiber	3.0 g
Fat - total	2.6 g
Moisture	64-68 %
Calcium	255.2 mg
Phosphorus	278.8 mg
Potassium	401.1 mg
Sodium	65.2 mg

Ingredients

Purified Water, Molasses, Animal Protein (Milk), Prebiotic Fiber, Fish Oil, Food Acids, Hydrocolloids, Mineral Mix, Corn Fiber, Vitamin Mix, Electrolyte Blend, L-Methionine.

Shelf Life

Shelf life is 24 months, unopened at room temperature storage.



Ordering Information

DietGel® Derm
72-13-5022
2 oz cup (56g)
96 cups per case
Barrier packed





AquaFeed® Z

The First Gel Diet Specifically Formulated for Zebrafish

AquaFeed® Z is a complete diet formulation based on the most up-to-date knowledge from zebrafish researchers integrated into a sustained delivery gel cube. AquaFeed® Z improves fish health and welfare by supporting uniform feeding for all fish, reducing competition and stress. Truly unique to the gel product format of AquaFeed® Z, is the physical property of being cut into a clean, consistent unit of measure.

Delivering Solutions

Nutrient Specific – Formulation based on nutrient requirements specific for zebrafish growth, reproduction, and maintenance.

Nutrient Utilization - Made with purified ingredients, including sustainable protein with high digestibility.

Natural Feeding – Gel cube properties provide for a longer feeding period and more natural grazing behavior, reducing stress and competition for food, resulting in improved fish welfare.

Consistent Unit of Measure – Designed to be cut into uniform 1 gram cubes for ease of clean and consistent feed administration.

Delivering Quality

- Purified Ingredients - No fillers, added starches, or binders.
- Sustainable protein sources
- Complies with quality standards as tested by an independent laboratory
- Certificate of analysis by manufactured lot
- Individually coded with lot and date of expiration
- Handling of the gel cube allows for clean application outside and inside the fish tank

Instructions

- Feeding dosage of 1 gram per 10 adult zebrafish
- To be administered under the direction of a veterinarian
- Manufactured for use in research animals

Feed	PER 1g AS FED	
	% Moisture	DM
AquaFeed® Z	74%	0.26

Life Stage	Weight (g)	SGR (%/d)	Feed Rate (%/d)	DM FEED VOLUME REQUIREMENT	
				g/10 fish/day	AF FEED VOLUME
Juvenile (30 dpf)	0.07	11.0%	20.0%	0.14	0.5
Sub-adult (56 dpf)	0.22	5.0%	10.0%	0.22	0.8
Adult (56+ dpf)	0.6	0.9%	5.0%	0.30	1.2
Adult (85 dpf)	0.8	0.5%	3.0%	0.24	0.9
Adult Repro (> 85 dpf)	0.8	0.5%	5.0%	0.40	1.5
AVG =				0.26	1.00

DM = Dry Matter AF = As Fed SGR = Specific Growth Rate

Packaging & Preparation



Unit: 175 gram pouch
Case: 33 Pouches per case
Storage: Room temperature

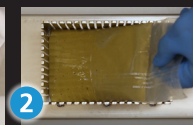


AquaFeed® Cutting Device

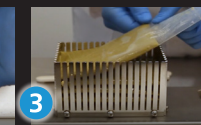
- Stainless steel, 2 components: base + wire cutting grid
- 1 pouch = 187 – 1 gram cubes
- 5 pouches = 935 cubes in one cut
- Convenient and easy to clean



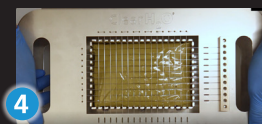
1 Open pouch w/ PouchMate.



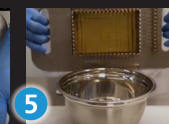
2 Slide gel slab into the cutting hopper.



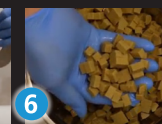
3 Stack the desired number of gel slabs into the hopper.



4 Align the wire cutting grid over the hopper cutting guides. Then, with even pressure, push the grid down through the stack of gel.



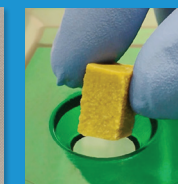
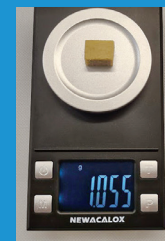
5 Holding the top grid and base together, invert the cutting device and empty the hopper into a container.



6 The AquaFeed® Z gel cubes are ready for administration.



Each resulting cube is 1 gram.



The physical properties of the cube allow for clean administration.

Nutritional Information per 100g

Calories	62.2 kcal
Protein	14.4 g
Carbohydrates - total	1.8 g
Sugars	0.5 g
Dietary Fiber	1.1 g
Fat – total	3.0 g
Saturated Fat	0.3 g
Cholesterol	2.9 mg
Water	72-76 %

Ingredients

Purified Water, Animal Protein (Fish, Milk), Vitamin Mix, Food Acids, Mineral Mix, Hydrocolloids, Vegetable Oil, Fish Oil, Betaine, Emulsifier, Electrolyte Blend, Mixed Tocopherols.

Shelf Life

Shelf life is 18 months, unopened at room temperature storage.



Ordering Information

AquaFeed® Z
60-01-1190
175g pouch
33 pouches per case





LabGel® Banana

Naturally Flavored Gel Providing Enrichment, Hydration and Medication Delivery

LabGel® Banana is a non-wetting naturally flavored gel, designed to provide enrichment and hydration. It is an excellent vehicle for medication delivery for nonhuman primates and other research animals.

Delivering Solutions

- Thermo-reversible gel supports various applications:
 - Use with enrichment devices
 - Delivery and flavor masking of oral medications
- Provides up to 93% water for efficient hydration
- No sugar added formulation for use with calorie restricted diets
- Flavor enhanced to promote acceptance and consumption

Delivering Quality

- Purified ingredients
- Complies with quality standards as tested by an independent laboratory
- Certificate of analysis by manufactured lot
- Individually coded with lot and date of expiration

Instructions

- To be administered under the direction of a veterinarian
- Manufactured for use in research animals

Please refer to page 42 for recommendations on adding desired medications.



LabGel® Banana

Nutritional Information per 100g

NO SUGAR ADDED

Calories	23.1 kcal
Protein	0.4 g
Carbohydrates (total)	4.5 g
Sugars	3.4 g
Dietary Fiber	1.0 g
Moisture	91-95 %
Calcium	25.4 mg
Phosphorus	36.7 mg
Potassium	99.7 mg
Sodium	28.3 mg

Ingredients

Purified Water, Banana, Hydrocolloids, Natural Flavor, Electrolyte Blend, Food Acids, Sucralose.

Shelf Life

Shelf life is 18 months, unopened at room temperature storage.



Ordering Information

LabGel® Banana
No Sugar Added
71-02-1081
 8 oz pouch (226 g)
 55 pouches per case





LabGel® Primate

Purified Dietary Supplement for Old and New World Primates

LabGel® Primate is a nutritionally fortified dietary supplement formulated with purified ingredients in a highly palatable firm gel designed for both Old World and New World primates.

Delivering Solutions

- Made with real banana puree and peanut butter
- High protein and fat formulation
- Fortified with Vitamin D and stabilized Vitamin C
- Added flax seeds and raisins for enrichment
- Flavor enhanced to promote consumption
- Suitable for all primates species
- Ready to use – no mixing or blending

Delivering Quality

- Superior alternative to can or dry supplements
- Efficient and easy portioning saves labor
- High temperature pasteurized for long term stability
- Complies with quality standards as tested by an independent laboratory
- Certificate of analysis by manufactured lot
- Individually coded with lot and date of expiration

Instructions

- To be administered under the direction of a veterinarian
- Manufactured for use in research animals

Please refer to page 42 for recommendations on adding desired medications.



LabGel® Primate

Nutritional Information per 100g

Calories	208.0 kcal
Protein	10.9 g
Carbohydrates (total)	30.6 g
Sugars	20.8 g
Dietary Fiber	1.8 g
Fat (total)	4.7 g
Moisture	47-51 %
Calcium	125.3 mg
Phosphorus	189.5 mg
Potassium	445.5 mg
Sodium	71.3 mg

Ingredients

Purified Water, Molasses, Banana Puree, Animal Protein (Fish, Milk), Peanut Butter, Plant Protein (Soy), Raisins, Vegetable Oil, Flax Seeds, Food Acids, Hydrocolloids, Natural Flavors, Emulsifier, Electrolyte Mix, L-Ascorbic Acid Phosphate, Corn Fiber, Mixed Tocopherols, Vitamin D3.

Shelf Life

Shelf life is 18 months, unopened at room temperature storage.



Ordering Information

LabGel® Primate
71-09-1081
8 oz pouch (226 g)
55 pouches per case





MediGel® Sucralose

Hydration Supplement for Medication Delivery

MediGel® Sucralose is a flavored, low calorie water gel, designed to administer medication for research animal applications.

Delivering Solutions

- Soft gel texture enhances consumption
- 99% purified water
- Replaces water bottle
- Low calorie sweetener masks medicinal taste
- Enhanced flexibility through in-house preparation and dosing

Delivering Quality

- Commercially sterile inside and out
- Tyvek® medical packaging
- E-Beam irradiated
- Complies with quality standards as tested by an independent laboratory
- Certificate of analysis by manufactured lot
- Individually coded with lot and date of expiration

Instructions

- Use as the sole hydration source during treatment
- To be administered under the direction of a veterinarian
- Dosage: 1 cup is designed for 5 mice over 2 days based on average size and consumption. Monitor intake.
- Manufactured for use in research animals
- Follow thermoreversible or hand mixing protocols

Please refer to page 42 for recommendations on adding desired medications.



MediGel® Sucralose

Nutritional Information per 100g

Calories	3.52 kcal
Carbohydrates	0.6 g
Dietary Fiber	0.6 g
Moisture	96-99 %
Calcium	13.4 mg
Phosphorus	26.7 mg
Potassium	27.6 mg
Sodium	22.5 mg

Ingredients

Purified Water, Hydrocolloids, Food Acids, Natural Flavor, Electrolyte Blend, Sucralose.

Shelf Life

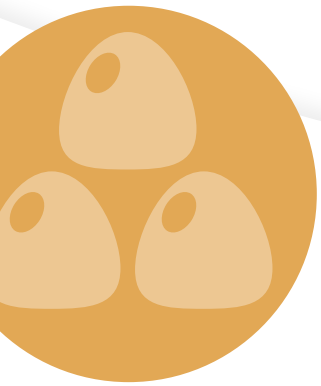
Shelf life is 24 months, unopened at room temperature storage.



Ordering Information

MediGel® Sucralose
74-02-5022
2 oz cup (56g)
96 cups per case
Barrier packed





FiberBites®

Fiber Fortified Enrichment Gummy for Nonhuman Primates

FiberBites® act as a prebiotic to nourish beneficial bacteria, promoting a healthy digestive tract while providing oral enrichment. Made with a natural source of inulin.

Delivering Solutions

- Great tasting natural flavors promote acceptance
- Convenient and easy to administer
- Low in calories
- Cost-effective supplemental fiber source

Delivering Quality

- Complies with quality standards as tested by an independent laboratory
- Certificate of analysis by manufactured lot
- Individually coded with lot and date of expiration

Instructions

- To be administered under the direction of a veterinarian
- Manufactured for use in research animals
- Recommended Dosage: 1 gummy/kg/day



FiberBites®

Nutritional Information per Gummy

Calories	6.67 kcal
Carbohydrates	3.0 g
Sugars	1.0 g
Dietary Fiber	1.6 g
Moisture	13-17 %
Sodium	3.3 mg

Ingredients

Chicory Root Fiber, Sugar, Water, Pectin, Natural Flavors, Citric Acid, Sodium Citrate, For Colors (Annatto, Elderberry Juice), Coconut oil, Carnauba Wax.

Shelf Life

Shelf life is 24 months unopened, at optimal storage conditions. Best if stored between 55° and 65°F (13° and 18° C). Do not freeze.

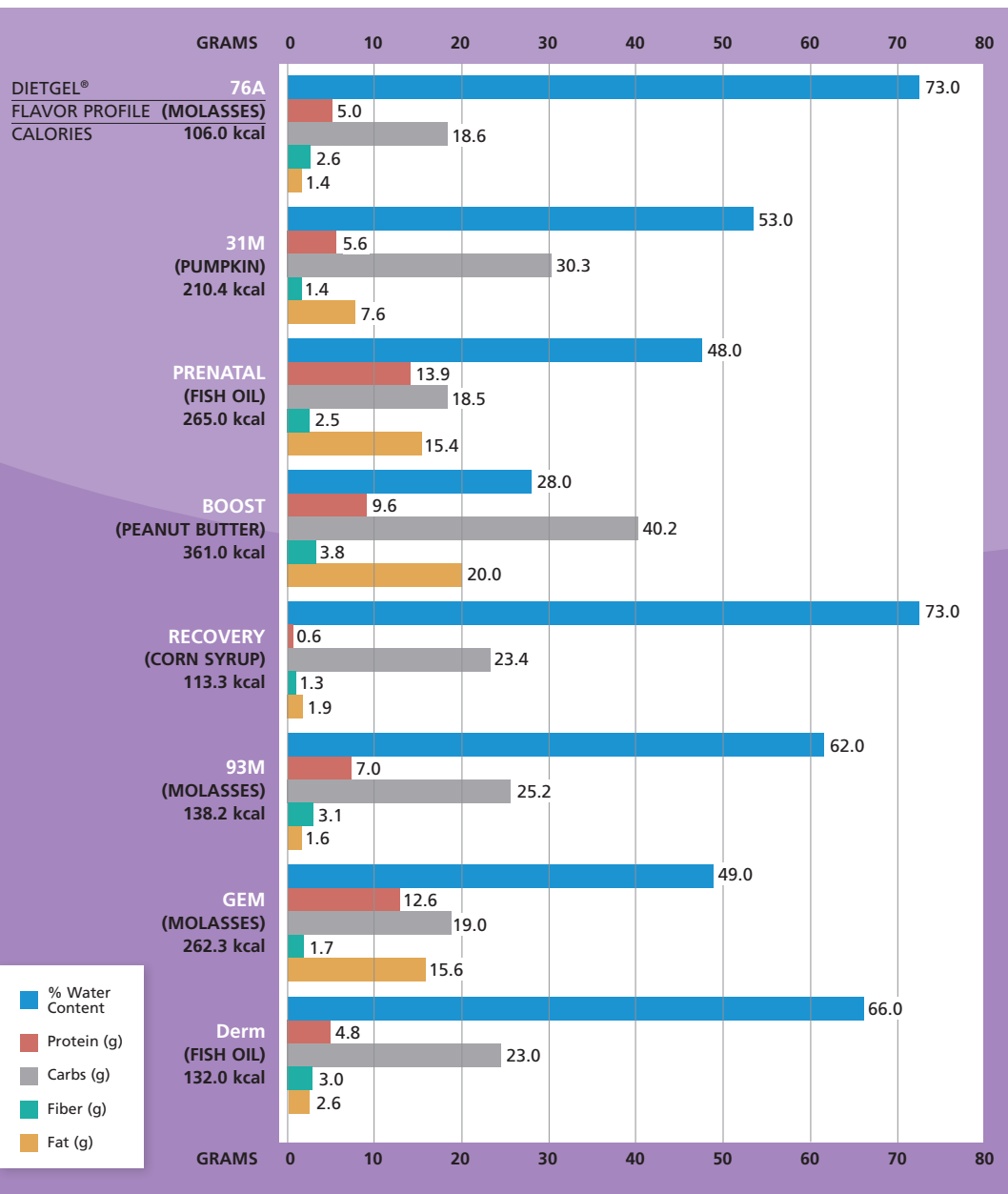
Ordering Information

FiberBites®
73-01-2101
3.5 gram gummy
10 lb case



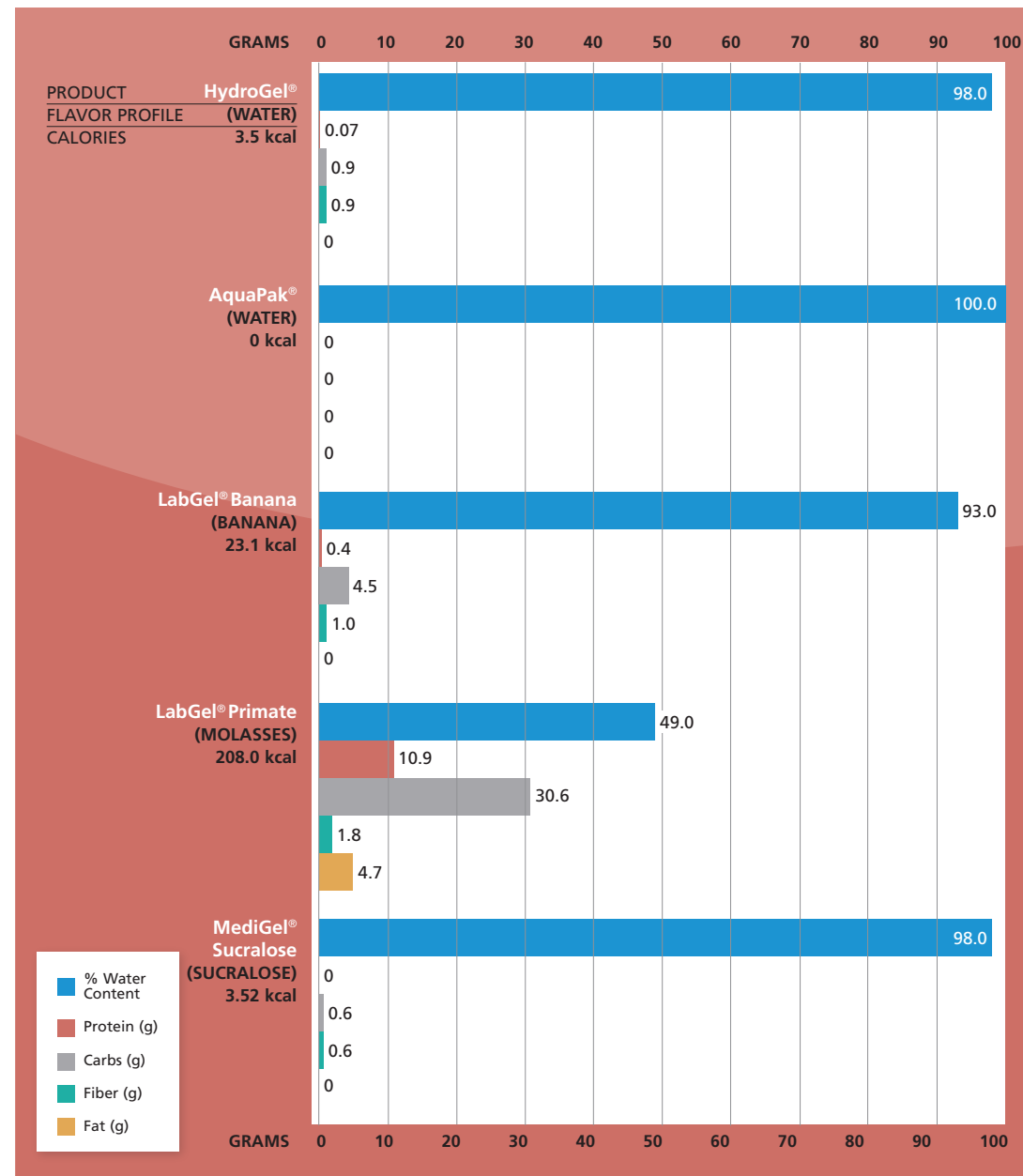
DietGel® for Rodents Nutritional Comparison

DietGel nutritional information for 100g




Hydration & Medication Delivery Products Nutritional Comparison

DietGel nutritional information for 100g



Medication Delivery Product Selection Guide

					
MIXING	THERMOREVERSIBLE	✓	✓		✓
	HAND MIX	✓		✓	
NUTRITION	HYDRATION ONLY	✓			
	HYDRATION & ELECTROLYTES		✓		✓
DRUG PROPERTIES	NUTRITION & HYDRATION			✓	
	WATER SOLUBLE DRUGS	✓	✓		✓
	FAT SOLUBLE DRUGS			✓	
	LOW BITTERNESS MASKING	✓	✓		✓
	HIGH BITTERNESS MASKING			✓	

Thermoreversible Mixing Guidelines

ClearH ₂ O Product	WATER BATH		MIXING		RE-GELLING
	Temperature	Liquification Time	Hand Shaking	Vortexing	Cooling Time @ RT
MediGel® Sucralose	60° C	15 minutes	15 seconds	15 seconds	15 minutes
DietGel® Recovery	60° C	15 minutes	15 seconds	15 seconds	15 minutes
LabGel®	60° C	15 minutes	15 seconds	15 seconds	15 minutes

Frequently Asked Questions

GENERAL FAQS

What does Barrier Packed mean?

Barrier Packed products contain cups or pouches inside of a medical grade Tyvek® bag. This saves labor by eliminating the need to wash individual cups or pouches.

How are ClearH₂O® gels commercially sterilized?

ClearH₂O® gel products are pasteurized at high temperature (190°F or 87°C) during the manufacturing process. Pasteurized products are then wrapped in Tyvek® medical packaging and boxed before being e-beam irradiated. Verification of commercial sterility occurs with each lot of products being tested by an independent laboratory for microbiological analysis and documented on Certificates of Analysis, which are available online.

What effect does E-beam have on the product?

E-beam dosages can vary within each case depending on the level of electron beam penetration. In addition to changing the color of the product, higher levels of irradiation can breakdown the gel matrix structure which causes a softer and more moist gel.

Why are gel products a good choice for research animals?

Unlike water bottles and mash diets, gels provide a consistent amount of hydration, nutrition and medication without wetting the animal.

Can you provide an MSDS for ClearH₂O® products?

The hydration and nutritional gel products sold by ClearH₂O® are not considered hazardous chemicals under the US Department of Labor, Occupational Safety and Health Communication Standard (29CFR 1910.1200). These products are under the umbrella of MSDS Exemption Reference for Food Manufacturers section 1910.1200(b)(5)(iii) – Any food, food additive, color additive, drug, cosmetic, or medical or veterinary device or product, including materials intended for use as ingredients in such products (e.g. flavors and fragrances), as such terms are defined in the Federal Food, Drug, and Cosmetic Act (21 U.S.C. 301 et seq.) or the Virus-Serum Toxin

Act of 1913 (21 U.S.C. 151 et seq.), and regulations issued under those Acts, when they are subject to the labeling requirements under those Acts by either the Food and Drug Administration or the Department of Agriculture. Accordingly, Material Safety Data Sheets are not required or necessary for these products.

What is the best way to store ClearH₂O® products?

Unopened, ClearH₂O® products can be stored at room temperature (20–22 °C (68–72) °F) and do not require special handling. Once opened (provided the gel has not been exposed to cross contamination) ClearH₂O® products can be stored at 4°C in a sealed bag/container to prevent the product from drying out for approximately 2 weeks.

What if my animals eat the plastic cup or pouch?

ClearH₂O® cups and pouches comply with FDA regulations for food contact and do not contain heavy metals, chemicals or known allergens. The plastic is non-toxic, BPA-free and harmless to the animal if it's consumed or chewed.

What is ClearH₂O®'s Quality Program?

ClearH₂O® manufactures products in accordance with Good Manufacturing Practices as defined in the Code of Federal Regulations (21 CFR Part 507).

ClearH₂O® operates an FDA approved HACCP facility that is inspected by independent third-party accredited bodies and federal agencies.

The ClearH₂O® quality program follows Safe Quality Food (SQF) accreditation requirements compliant with the Global Food Safety Initiative (GFSI) certification.

Why is the texture of the product I received different than expected?

In addition to varying levels of irradiation, storage conditions or transportation stress may impact the texture of the product. If you have specific questions about a product you received, contact Customer Service at orders@clearh2o.com.

Frequently Asked Questions

HYDROGEL[®] FAQs

What are the main applications for HydroGel[®]?

HydroGel[®] is a non-wetting hydration supplement that is particularly useful for transporting animals. It is also a great choice for recovering animals and special needs animals who require consistent, easy-to-consume hydration support.

How much HydroGel[®] do I need to supply for an animal during shipment?

The amount of HydroGel[®] required is dependent on the species of animal, the number of days in transit, and the number of animals. Daily water consumption differs by animal. Many factors such as ambient temperature, animal weight and environmental conditions impact daily water consumption. The suggested values listed below are average daily water consumption guidelines for frequently shipped animals. HydroGel[®] is 98% pure water; therefore, the gel consumption is equivalent to water consumption.

- Mouse: 4 - 7g
- Guinea Pig: 50 - 80g
- Rat: 24 - 20g
- Rabbit: 100 - 600g

DIETGEL[®] FAQs

When should I use DietGels[®]?

DietGels[®] are soft dietary supplements containing carbohydrate, fat, protein, and fortified with mineral and vitamin mixes (except for DietGel[®] Recovery, which only contains a mineral mix). They are a superior alternative to mash diets that are used as a supplement or as the sole source of nutrition, reducing time and labor costs (in the vivarium or lab). DietGel[®] 93M is a complete diet. Please consult with your nutritionist for long term use. DietGels[®] are designed to provide compromised rodents a palatable source of hydration and nutrients and are an excellent solution for:

- Breeding and weaning of pups
- Post-surgical support
- Neurologically compromised rodents
- EAE models, Transgenic Mice
- Shipping

What is the difference between DietGel[®] 76A (w/animal protein) and DietGel[®] 76A (w/wheat protein)?

DietGel[®] 76A (w/Animal Protein) contains casein as the source of protein, while DietGel[®] 76A (w/Wheat protein)

contains a vegetarian source of protein. There are some slight changes in nutritional values, and a different flavor profile that can make all the difference for your animals.

Moreover, as animal products sometimes encounter issues for exportation, DietGel[®] 76A (w/Wheat protein) can be imported in Europe.



Why does DietGel[®] sometimes have white or brown specs?

Non-soluble ingredients are sometimes visible in the DietGel[®] showing up as white to brown specs or clumps. The non-soluble ingredients do not affect the nutritional integrity of the product, making it 100% safe to use for your research animal.



What is the white foam in the gel?

It is rare but normal to see white particulate on top of or within the product. During the production process, foam can form from the mixture and interaction of all the ingredients and rise to the top of the gel. The foam, which contains ingredients such as casein or sugar, can dry out, exposing casein or sugar crystals, and form a white, crystal-like residue layer that can be mistaken as mold. It's completely safe for the animals and poses no health risk. Products are lab tested by batch, to confirm they are safe for consumption.



Why does the color of DietGel[®] vary from case to case?

The color of DietGel changes during the irradiation process. When DietGel[®] is produced, the color is tan, and the texture is firm. The irradiation process changes the product color from tan to a darker caramel color and breaks some of the bonds in the gel matrix. All products are 100% irradiated and safe to use.

Frequently Asked Questions

Why does the texture and consistency of DietGel[®] Boost vary?

The texture and consistency of DietGel[®] Boost can vary naturally due to the incorporation of chunky peanut butter into the product which results in a firmer gel. Extreme high and low temperatures can also impact the consistency of the product.

Can I use DietGel[®] Recovery for support during shipments?

DietGel[®] Recovery is an excellent choice as a hydration source when shipping mice and rats. Many sites have successfully used DietGel[®] Recovery during transport of rodents who arrive dry, healthy and require less time to acclimate. DietGel[®] Recovery is a purified water gel containing 60% water. It is fortified with calories and minerals and provides 155 kcals/100 grams.

When shipping guinea pigs, we recommend using HydroGel[®]. In a recent study conducted by Charles River Laboratories, consumption, and weight loss of guinea pigs during transit were significantly better with HydroGel[®] compared to a sweetened gel. The study showed that animals consumed more HydroGel[®], therefore preventing body weight loss and decreasing clinical pathologic indicators of dehydration.

How long can DietGel[®] be stored at room temperature once opened?

When left open, DietGel[®] will evaporate over time. Within 4-5 days, the product will lose over 50% of its moisture, making it more difficult for the animals to consume and less appetizing. It is best to change out the product after 2-3 days of being left open.

MEDIGEL[®] FAQs

How do I add medications to MediGel[®] Sucralose?

There are two ways to add medications to MediGel[®] Sucralose: via syringe through the top of the foil cup lid or by removing the foil lid and mixing the drug directly into the gel.

The most common method is to liquify the gel and then add the medication through the foil lid. Thermoreversible gel mixing instructions can be found on our website here. After the medication is added, shake the cup vigorously for 10 seconds to mix the

medication evenly in the gel. One trick to ensure that the medication is mixed evenly into the gel is to add a natural food color dye with the medication solution. This enables a visual confirmation of the mixing.

After the medication is added, it is best to place the gel into a refrigerator for 30 minutes prior to using the gel with the animals. The cooler temperature allows the gel to set and protects the medicant during storage.

How do I calculate the medication dosage for using MediGel[®] Sucralose?

To answer this question, it is best to use an example calculation. In this calculation, we are using a drug concentration of 10mg/kg/day. For a 30-gram mouse, use 10mg/kg x 0.03kg = 0.3mg of drug/day/mouse.

A 30–35-gram mouse on average will consume 7mL of gel per day (about 0.2 ounces), so we would want a concentration of 0.30mg/7mL/gel = 0.04mg/mL. Because our products are in 2oz containers (60mL), you would want to add 2.4mg of ibuprofen to one cup of MediGel[®] Sucralose (60mL x 0.04mg/mL = 2.4mg).

One cup of MediGel[®] Sucralose medicates and hydrates up to 5 mice for 2 days.

LABGEL[®] FAQs

How to use LabGel[®] products?

LabGel[®] Banana is a hydration supplement for non-human primates. It is 90% water and can be used as an emergency water source, during transportation or as supplemental hydration. It is also thermoreversible and can be used for medication delivery. Thermoreversible gel mixing instructions can be found on our website.

LabGel[®] Primate is a nutritionally fortified dietary supplement formulated with purified ingredients in a highly palatable firm gel designed for both Old World and New World primates. Both LabGel[®] products can be used as supplements or as treats for training and enrichment.

FIBERBITES[®] FAQs

What is the recommended dosage for FiberBites[®]?

FiberBites[®] provide an easy to administer, readily accepted source of fiber for nonhuman primates. Each bite contains approximately 1.6 grams of inulin from

Frequently Asked Questions

chicory root, a prebiotic fiber source that promotes a healthy gastrointestinal tract.

The general recommended daily dose of fiber in NHPs is 1.5 to 2 grams per kg per day. Assuming the primate weighs 8 kilos – it requires 12 to 16 grams of fiber per day. To convert grams of fiber needed to the proper number of FiberBites[®], divide the daily fiber dose by 1.6 grams.

For example, 12 to 16 grams of fiber daily equals 7-10 FiberBites[®]; we would recommend starting with 3 pieces twice a day and increasing to 4 twice daily depending upon your results.

What is the best way to store FiberBites[®]?

FiberBites[®] are best if stored between 55-65 degrees Fahrenheit (13-18 degrees Celsius).

AQUAPAK[®] FAQs

What is AquaPak[®] and how do I use it?

AquaPak[®] is a ready-to-use water pouch that can be used as a complete water supply. AquaPak[®] is compatible with commercially available disposable water valves. One pouch will provide enough hydration for 5 mice/2 rats for up to 2 weeks.

What is the manufacturing process to produce the purified water in AquaPak[®]?

Water coming into ClearH₂O's FDA-inspected manufacturing facility first passes through a 5-micron pre-filter before entering a triple-stage sequence of activated filtration, before entering our Reverse Osmosis (RO) membrane filtration system. Batch processing occurs in a positive-pressure HEPA-filtered clean room environment. The ultra-filtered water is then treated with acidification to a range of 2.5 to 3.0 pH or chlorination to a range of 5.0 to 25.0 ppm to meet customer specifications. The purified treated water then goes through a final 1-micron filtration step before pouch filling and sealing, which also occurs in a separate, positive-pressure HEPA-filtered packaging clean room.

Are Certificates of Analysis available for AquaPak[®]?

Yes. A Certificate of Analysis (COA) is generated for each lot of AquaPak[®] and available online at www.clearh2o.com/about-clearh2o/quality-assurance/. Upon entering the AquaPak[®] lot number in the search field, a downloadable PDF file is provided.

What is the expiration dating for AquaPak[®]?

The expiration dating for AquaPak[®] is twenty-four (24) months from the date of manufacture.

What is the AquaPak[®] pouch material made of and is it an approved food contact surface material?

AquaPak[®] purified water is packaged in a custom designed ultra-high oxygen barrier, high strength, puncture and split resistant EVOH pouch film.

AquaPak[®] pouch film meets CFR 21 177.1520 regulatory compliance as a food contact surface material. The pouch film is commonly used throughout the food and beverage industry for its high barrier properties that support extended shelf life.

What is EVOH pouch film?

EVOH (Ethylene Vinyl Alcohol) is a type of plastic that is commonly used in packaging products as a barrier layer. It is a very effective oxygen barrier, which means that it can prevent the transfer of oxygen into or out of the package. This can help to preserve the freshness and quality of the product inside. EVOH film is commonly used in packaging for food, pharmaceutical products, and industrial chemicals where minimum permeability is required.

Is the AquaPak[®] pouch material BPA-Free?

Yes. AquaPak[®] pouch film does not contain Bisphenol-A, or other bisphenols including B, C, E, F, S and Z.

Can AquaPak[®] be subjected to extreme temperatures?

The AquaPak[®] pouch film has been tested under extreme high (250°F) and low (0°F) temperatures. The film integrity is maintained at these temperatures.

Normal temperature variations that can occur in transit and with seasonality should not have any impact on AquaPak[®]. To maintain integrity of the pouch seal, AquaPak[®] should not be subjected to extreme temperatures.

Is the exterior surface of the AquaPak[®] pouch sterile?

Sealed AquaPak[®] pouches are packaged into corrugated cases inside a positive air pressure HEPA-

Frequently Asked Questions

Filtered room. However, complete packaged cases are not subject to irradiation or an alternative kill-step. Therefore, the exterior surface of the pouches is not considered sterile.

Can therapeutics be incorporated into AquaPak[®]?

Yes. The AquaPak[®] pouch film can be used with commercially available transparent silicone self-sealing patches designed for injection of water-soluble compounds into lab animal water supplies.

Where can the medication delivery self-sealing silicon injection patches be purchased?

Self-sealing silicon injection patches are commercially available from various laboratory suppliers.

How long does the AquaPak[®] water supply last?

Using an average daily consumption rate of 5mLs of water per mouse, a 450mL AquaPak[®] pouch will last approximately 14 days for a 5-mouse cage density, and approximately 7 days for a 10-mouse cage density.

It is important to observe that there will usually be some residual water (approx. 60mLs +/-) in the bottom of the pouch due to the height of the siphon holes relative to the depth of the shaft on the disposable valve coupled with the natural vacuum that develops in the pouch as the water is consumed.

Actual days of water supply will vary dependent on mouse model, sex, age, and environmental conditions.

How do I know when I need to change the AquaPak[®] pouch?

The AquaPak[®] pouch should be changed when the pouch is completely collapsed upon itself, and the water level is slightly above the piercing cone of the valve. However, you will want to conduct testing to confirm how long the pouch will last under your conditions. Please note that even though there is visible water left in the pouch, the water may not drip from the valve due to the vacuum created at this water level.

Where can cage inserts or adapters be purchased?

Check with your cage manufacturer for water pouch adapter information.

Do I need to change the disposable valve each time I change an AquaPak[®] pouch?

No. The commercially disposable valves have performed reliably over multiple weeks of AquaPak[®] pouch changes and can be used continuously until either cage lids are disposed of, or the cage population has been transferred.

However, consistent with good husbandry practices, it is important to monitor and inspect the operation of the valves to ensure they are reliably functioning and/or that the rodents haven't chewed the valves to the point of being inoperable.

What is the blue ingredient in AquaPak[®] Blue?

AquaPak[®] Blue contains an inert food-grade color additive approved by the FDA.

AQUAVALVE[®] FAQs

If animals chew and consume any of the AquaValve[®] plastic, is it safe?

Yes. The blue external components of AquaValve[®] are made of polyoxymethylene (POM) plastic. POM is commonly used for its rigidity and abrasion resistance (chewing). The POM used in AquaValve is compliant with FDA, USDA, NSF, and other food material standards for safe contact with food and water. AquaValve[®] plastic components do not contain Bisphenol-A, or other bisphenols including B, C, E, F, S and Z.

How is AquaValve[®] packaged?

AquaValve[®] is packaged in 100-valve containers that have been e-beam irradiated and confirmed sterile.

Is AquaValve[®] recyclable?

Yes, the components of AquaValve[®] are recyclable.

ClearH₂O[®]

Clearly better products for improved animal health and welfare.

COMPANY INFORMATION

ClearH₂O[®] is committed to advancing animal research and agriculture with more effective and ethical hydration, nutrition, and medication delivery solutions utilizing our proprietary gel technology. Made in our FDA approved facility, ClearH₂O[®] products are formulated with purified ingredients and highly palatable to optimize consumption. The ready to use, convenient product format with long-dated, room temperature shelf stability helps animal researchers and producers improve the health and welfare of their animals while optimizing research and productivity outcomes.

www.clearh2o.com **1-888-493-7645**

REGISTERED TRADEMARKS FOR CLEARH2O

AquaBeads[®], AquaDrop[®], AquaGel[®], AquaPak[®], AquaValve[®], CritiCare[®], DietDrop[®], DietGel[®], FiberBites[®], GelDrop[®], HydroDrop[®], HydroGel[®], LabGel[®], MediGel[®], MediDrop[®], Nutri-Paste[®], TransGel[®], VetGel[®], VitaBites[®], WaterBite[®]